



**XT-V Series  
Automated Hematology Analyzers**

*Monitor as Many Species as You Can Imagine*



# Imagine The Possibilities

Reliable detection of abnormal samples is a vital issue in the toxicology and veterinary laboratory.



Accurate RBC, PLT, Retic\*, WBC and WBC differential results are essential for meaningful clinical studies. Today's progressive toxicology lab managers are finding that the traditional limits of hematology analyzers constrain their effectiveness and productivity. The XT-V Series from Sysmex changes that.

## **Gain unprecedented support to imagine unprecedented performance**

The XT-V Series, including the XT-2000i V and XT-1800i V, brings Sysmex's advanced, patented fluorescent flow cytometry technology and state-of-the-art cell counting methods to your animal laboratory. This series provides more versatility for better testing, more comprehensive data and more targeted analysis.

By supporting an unlimited number of species and strains, the XT-V Series provides the flexibility to structure your tests for your needs.

Plus, this system supports unique gating for individual cell populations by study protocol, and the ability to conduct manual analysis by user-set parameters.

Sysmex Automated Hematology Analyzers are renowned throughout the industry for performance, reliability and responsiveness.

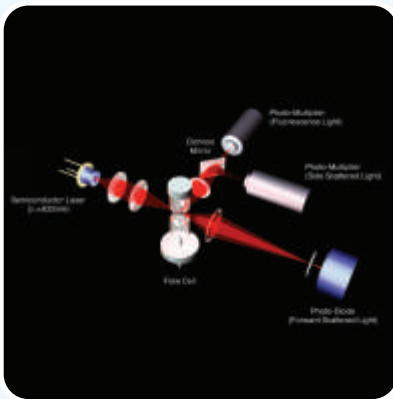


\* Reticulocytes and IRF only available on XT-2000iV

# Imagine Improved Diagnostic Results with XT-V Series Technology

## Laser Technology

For better reliability, longer life and more efficiency, the XT-V Series utilizes an avalanche photodiode with a small laser bench and integrated electronic boards.

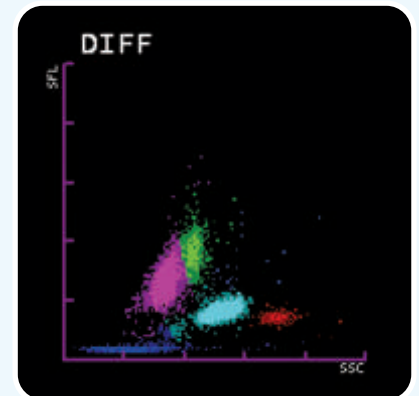


## Comprehensive Erythrocyte and Platelet Diagnostics

For better accuracy in cell count and sizing, the XT-V Series utilizes hydrodynamic focused red cell and platelet counting. In addition to the standard impedance count, the XT-V Series offers fluorescent platelet and retic analysis, which can minimize interferences such as microcytes, RBC fragments and giant platelets as well as detect cell immaturity or activation.

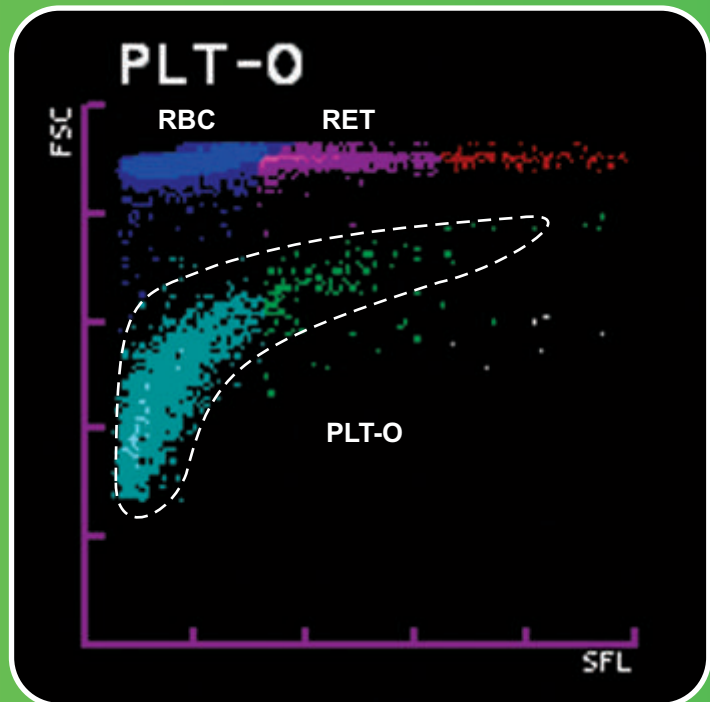
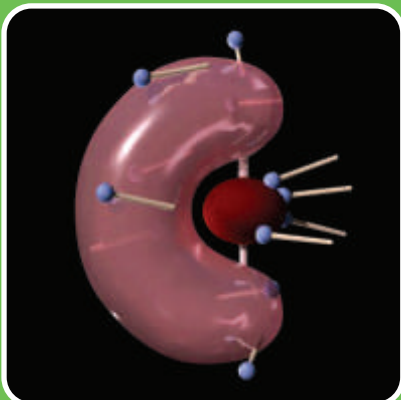
## WBC Differential Scattergram

For enhanced diagnostics, WBC cell populations are measured using fluorescent flow cytometry with side scatter and side fluorescence.



## Non-cyanide Hemoglobin

For safety and to assure accuracy in hemoglobin measurement, the XT-V Series utilizes Sysmex's cyanide-free SLS method for hemoglobin measurement. SLS provides accurate HGB results compared to reference methodology.



Fluorescent Optical Platelet

## Imagine Improving Study Integrity with Unique Gating Flexibility

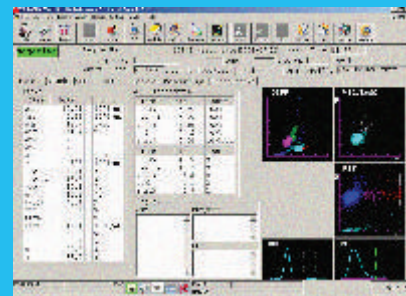
- Open architecture supports monitoring of unlimited species and strains
- Unique gating feature permits adjustment as needed by study parameters for individual cell populations within study protocols
- Manual gating of cell populations by parameter of RBC, PLT, Reticulocyte\*, WBC and WBC differential provides versatility in monitoring results over the course of the study protocol by cell population

## Imagine Enhanced Lab Productivity with Streamlined Workflow

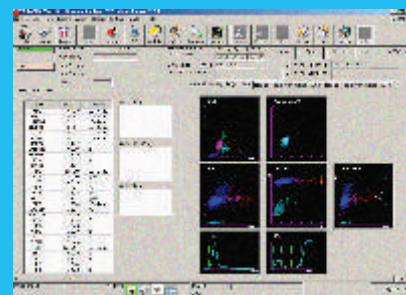
- User-defined random access testing—full 80 samples per hour
- Consistent throughput—80 samples per hour with reticulocyte measurement
- Single quality control product
- No customer calibrations required
- Supports small sample requirements (manual open mode – 85µL, automode – 150µL)

## Imagine Delivering Proven System Reliability with Sysmex

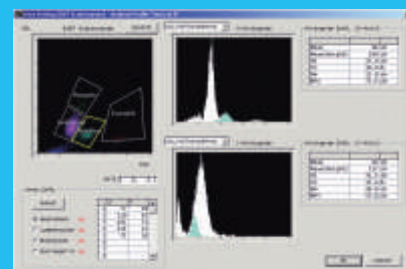
- Ranked best in hematology system performance, system reliability and service response by MD Buyline (MDB – Market Outlook, January 2010)
- Ranked best in instrument performance and reliability for the tenth consecutive year in 2009 annual IMV ServiceTrack™ customer satisfaction survey
- Software meets US requirement for toxicology study designs and is compliant with FDA 21 CFR Part 11



*The XT-V Series employs intuitive, easy-to-use software and standardized display formats to simplify sample information management.*



*The XT-2000iV and XT-1800iV provide discrete WBC differential sub population identification utilizing fluorescent flow cytometry.*



*With the XT-V Series, WBC differential sub populations are easily gated manually, enabling the researcher to discriminate cell populations throughout a study as sample populations change due to protocol or disease.*

# XT-V Series Specifications

<b>Technologies</b>	Fluorescent Flow Cytometry method: WBC-DIFF, Reticulocytes*, PLT-O*, DC sheath flow method: RBC, HCT, PLT, Cyanide-free SLS method: HGB
<b>Animal Species</b>	Monkey, rat, mouse, dog, cat, rabbit, guinea pig, cow, pig, horse, and 20 “other species” categories Unlimited profile creation with manual gating feature
<b>Parameters</b>	WBC, RBC, HGB, HCT, MCV, MCH, MCHC, PLT Neut%, Lymph%, Mono%, Eo%, Baso% Neut#, Lymph#, Mono#, Eo#, Baso# , IRF* RDW-SD, RDW-CV, MPV, RET%*, RET#*,
<b>Throughput</b>	80 samples/hour
<b>Aspiration Volume</b>	Autosampler or manual closed mode: 150 µL Manual open mode: 85 µL Capillary mode: 40 µL
<b>Data Storage</b>	3,000 samples (incl. graphics) 5,000 sample information 1,000 selective test orders
<b>Quality Control</b>	Comprehensive QC files including “Current” and “New” lot feature
<b>Interfaces</b>	Host, graphic printer
<b>Dimensions/Weights w x h x d [in]/[lbs]</b>	Main unit: 20.5x24.8x19.7/114.6 Sampler: 20.5x8.7x4.3/15.4 Pneumatic unit: 11.2x14x15.8/35.3
<b>Standard</b>	Rack Sampler for 50 sample tubes Hand-held barcode scanner FDA 21 CFR Part II Compliant Software
<b>Linearity</b>	WBC 0-310x10 <sup>3</sup> /µL RBC 0-8x10 <sup>6</sup> /µL HGB 0-25GM/dL HCT 0-60%

For Animal Use Only  
XT-V Not for Human Sample Analysis

\* XT-2000iV only

**Sysmex Corporation**

1-5-1 Wakinohama-Kaigandori,  
Chuo-ku, Kobe 651-0073, Japan  
Tel. +81 (78) 265-0521  
Fax +81 (78) 265-0530  
[www.sysmex.co.jp](http://www.sysmex.co.jp)

**Sysmex America, Inc.**

One Nelson C. White Pkwy,  
Mundelein, IL 60060, U.S.A.  
Tel. +1 (847) 996-4500  
Fax +1 (847) 996-4397  
[www.sysmex.com/usa](http://www.sysmex.com/usa)

**Sysmex Canada, Inc.**

5045 Orbitor Drive,  
Building 9, Suite 401  
Mississauga, ON L4W 4Y4  
Tel. +1 (905) 366-7900  
Fax +1 (905) 366-7899  
[www.sysmex.ca](http://www.sysmex.ca)

**Sysmex do Brasil Indústria e Comércio Ltda**

Rua Joaquim Nabuco, 615 - Bairro Cidade Jardim,  
São José dos Pinhais  
Paraná - Brasil - CEP 83040-210  
Tel. +55 (41) 2104-1314  
Fax +55 (41) 2104-1300  
[www.sysmex.com.br](http://www.sysmex.com.br)

**Sysmex Europe GmbH**

Bornbarch 1, 22848,  
Norderstedt, Germany  
Tel. +49 (40) 52726-0  
Fax +49 (40) 52726-100  
[www.sysmex-europe.com](http://www.sysmex-europe.com)

**Sysmex Deutschland GmbH**

Bornbarch 1, 22848,  
Norderstedt, Germany  
Tel. +49 (40) 5341020  
Fax +49 (40) 5232302  
[www.sysmex.de](http://www.sysmex.de)

**Sysmex UK, Ltd.**

Sysmex House, Garamond Drive, Wymbush  
Milton Keynes, Buckinghamshire, Mk8 8DF, U.K.  
Tel. +44 (870) 9029270  
Fax +44 (870) 9029211  
[www.sysmex.co.uk](http://www.sysmex.co.uk)

**Sysmex Asia Pacific PTE, Ltd.**

2Woodlands Sector 1, #01-06Woodlands Spectrum,  
Singapore 738068, Singapore  
Tel. +65 (6221) 3629  
Fax +65 (6221) 3687  
[www.sysmex-ap.com](http://www.sysmex-ap.com)

**Sysmex Shanghai, Ltd.**

9th Floor, Azia Center,  
1233 Lujiazui Road, Shanghai, 200120 China  
Tel. +21 (6886) 3300  
Fax +21 (6886) 3355  
[www.sysmex.com.cn](http://www.sysmex.com.cn)



**Mixed Sources**  
Product group from well-managed  
forests, controlled sources and  
recycled wood or fiber  
[www.fsc.org](http://www.fsc.org) Cert no. SW-COC-002987  
© 1996 Forest Stewardship Council